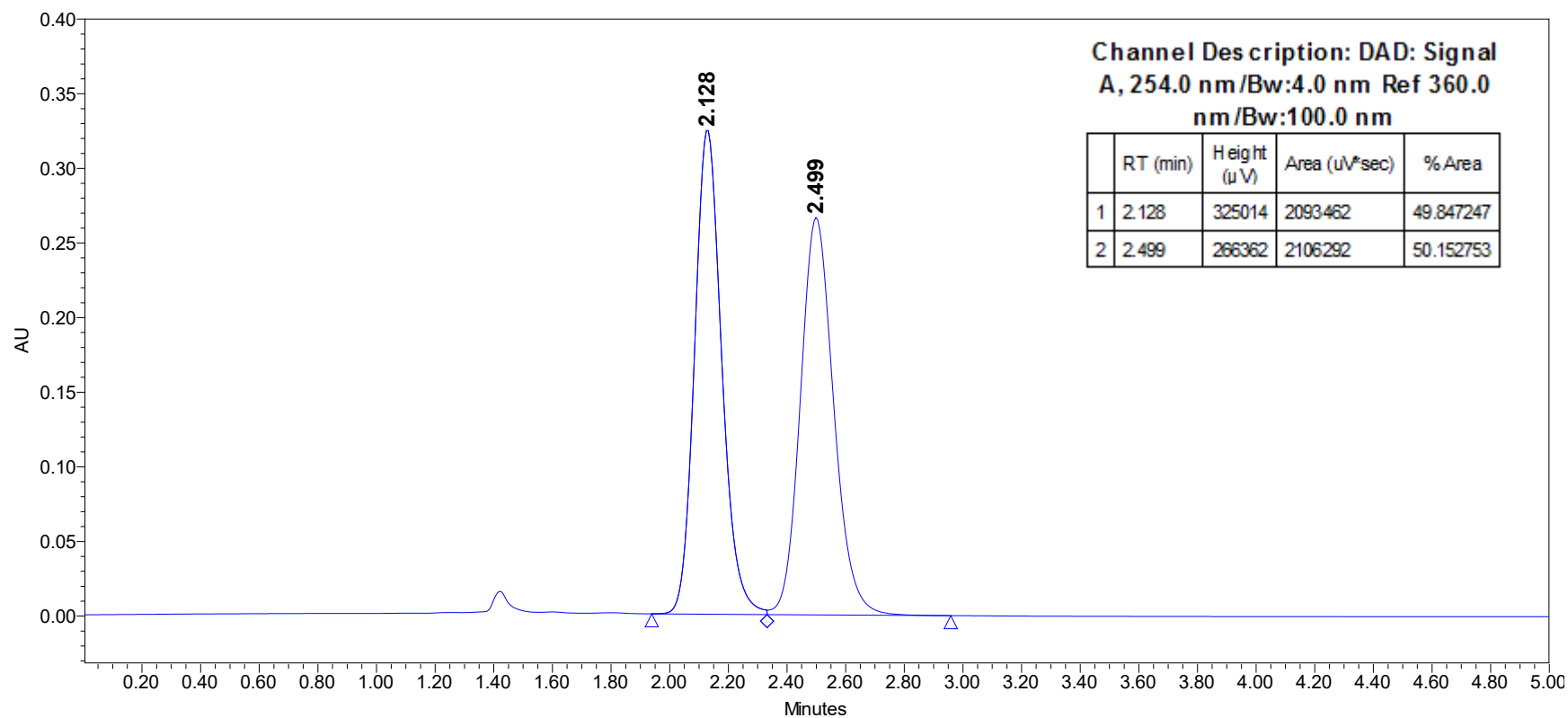
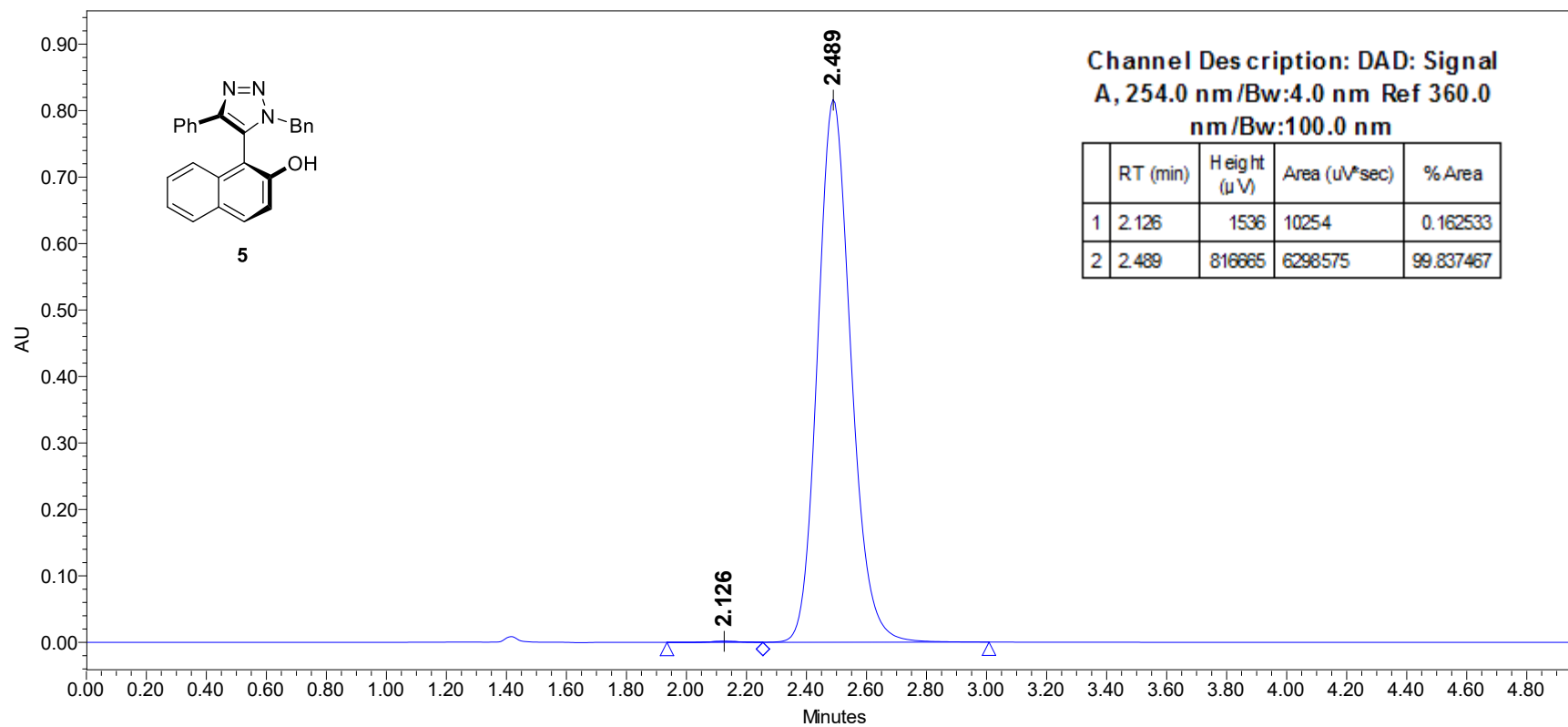


Chiral HPLC conditions: The chiral HPLC analysis was performed by isocratic elution using a 60:40 mixture of hexane (Sigma Aldrich, 98.5%): *i*-PrOH (Sigma Aldrich, HPLC grade) using a Chiralpak IC-3 (3 μ m, 4.6 x 100 mm) Part Number 83523, Flowrate of 1 ml/min, monitoring at 254 nm at column temperature of 30 °C. t (major) = 2.5 min, t (minor) = 2.1 min.

Racemic mixture:



Run 1:



Run 2:

